



Reeco

Reeco.info

Industrial robots

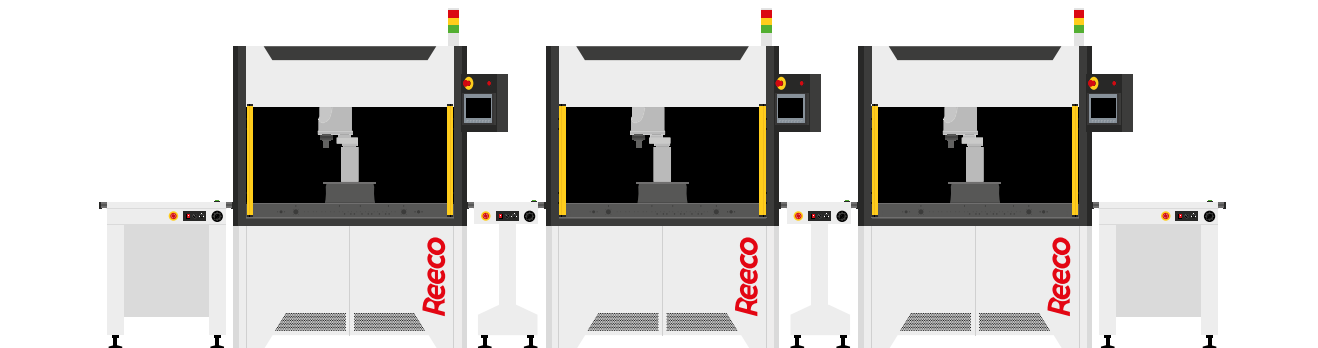
REECO robots are ready-made solutions. Each robot is a fully automated, independent unit that can be implemented into an existing or newly built production line.

REECO industrial robots do not require any advanced design, planning or integration processes and their operation requires no expertise or experience. Each REECO robot is a separate process that can be easily automated.

The manufacturer of robot arms is Yamaha Robotics, whose representative for Poland and the Balkan countries is RENEX.



WWW.RENEXROBOTICS.PL

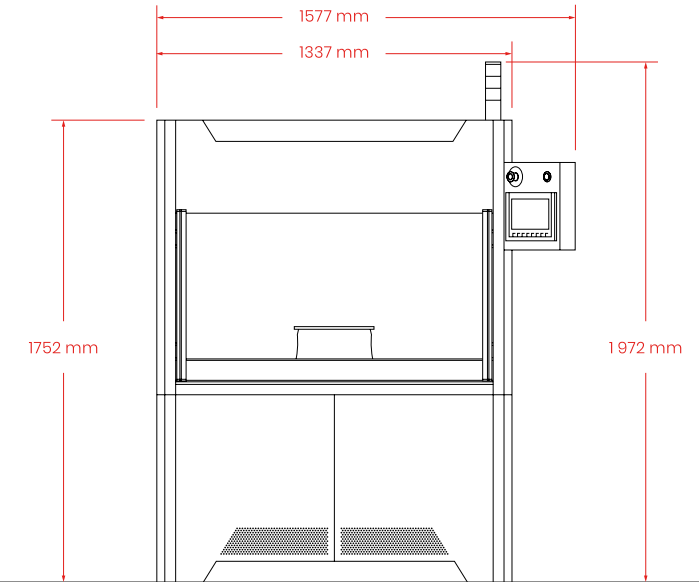


SMEMA communication enables several machines to work in line

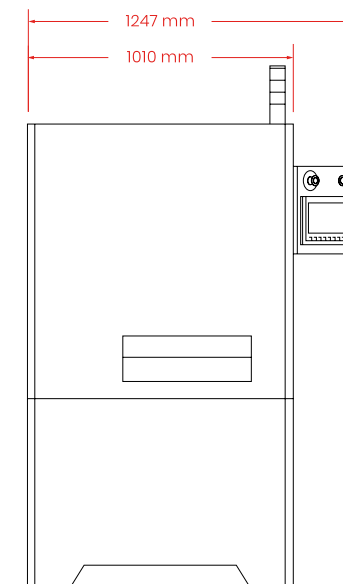
Reeco.info

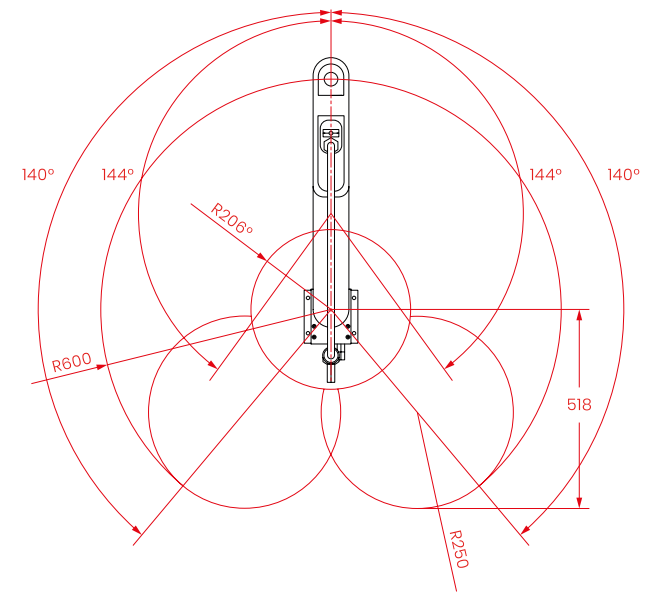
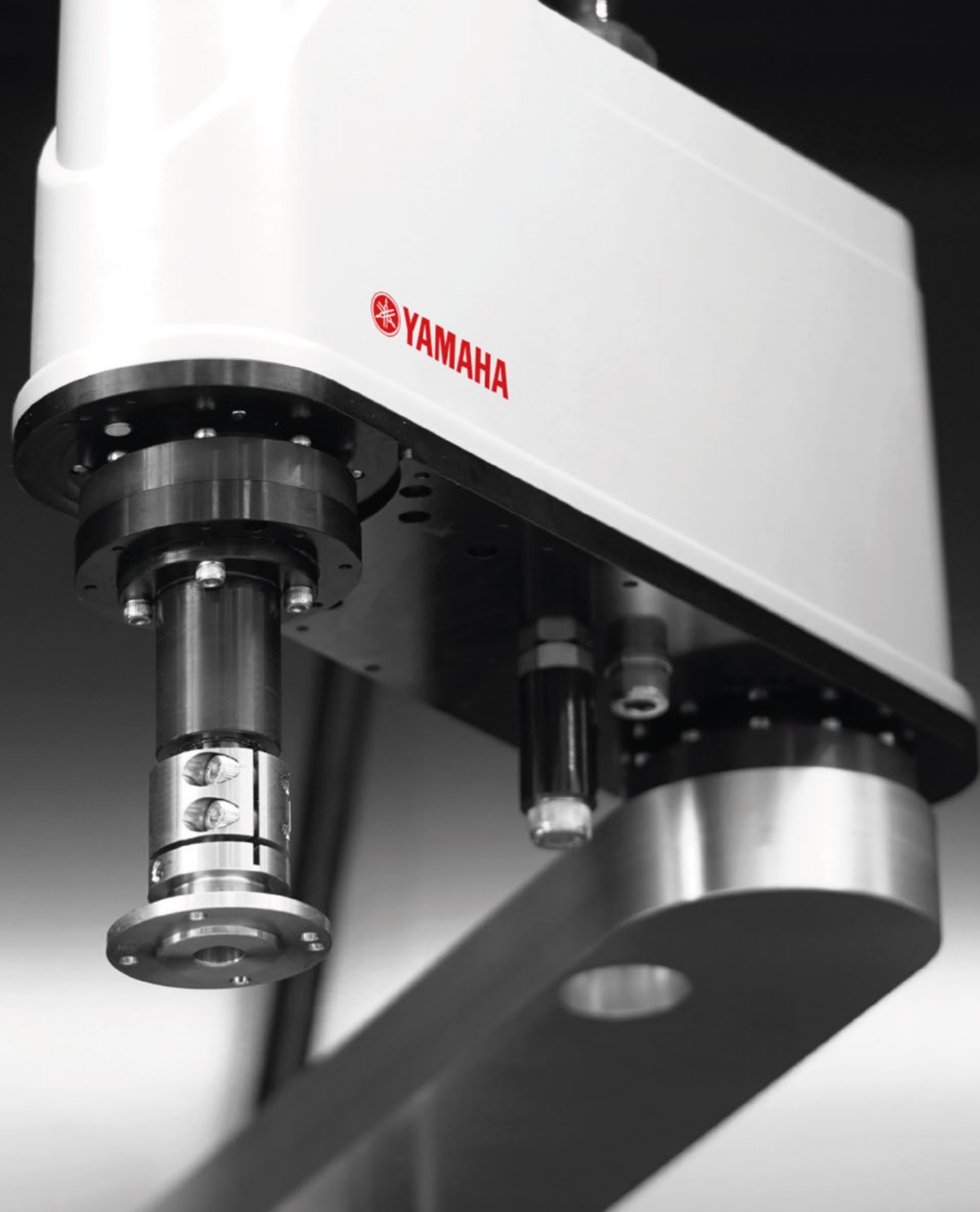


Front



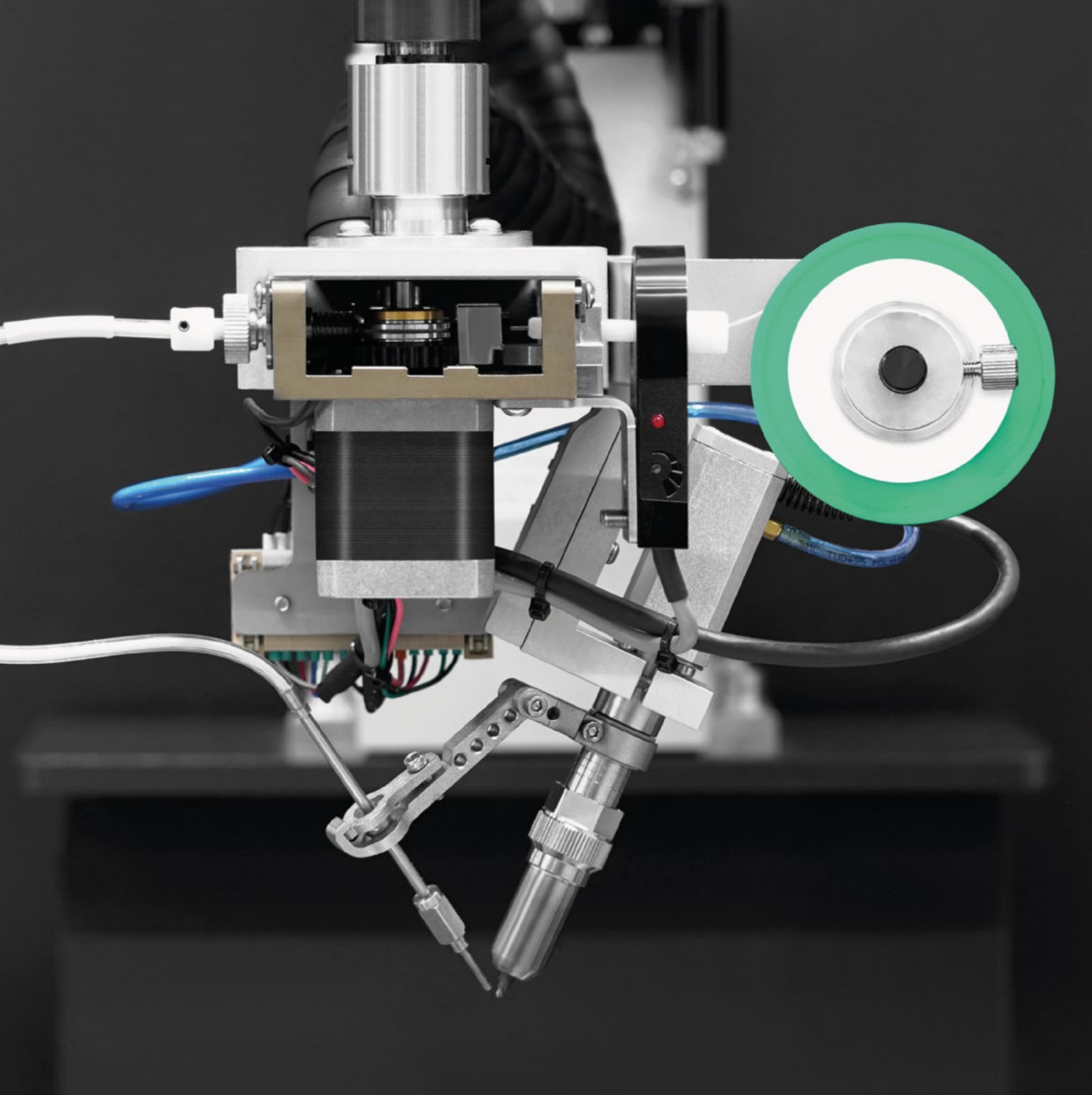
Side





	X axis	Y axis	Z axis	R axis
Range	R600			
Arm length	350 mm	250 mm	150 mm	-
Available rotation angle	+/-140°	+/-144°	-	+/-360
Servo power	200W	150W	50W	150W
Gearbox type	Strain wave gearbox	Strain wave gearbox	Ball screw	Strain wave gearbox
Repeatability*	+/-0,01 mm	+/-0,01 mm	+/-0,01 mm	+/-0,004°
Maximum speed	4,9 m/s	4,9 m/s	1,1 m/s	1020°/s
Maximum load	5 kg			
Weight	22 kg			

* With a constant ambient temperature



Soldering robot

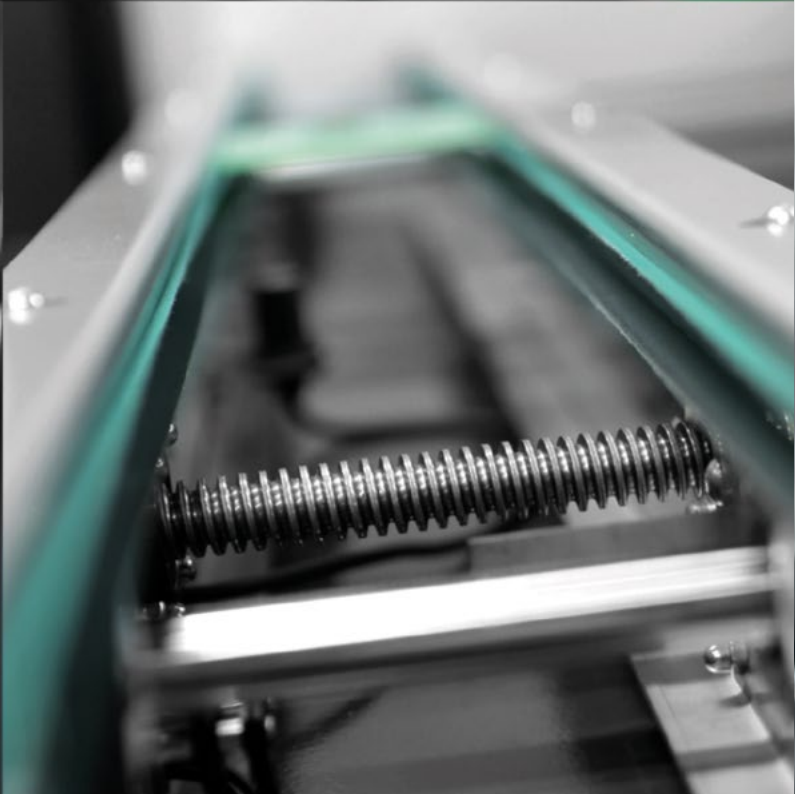
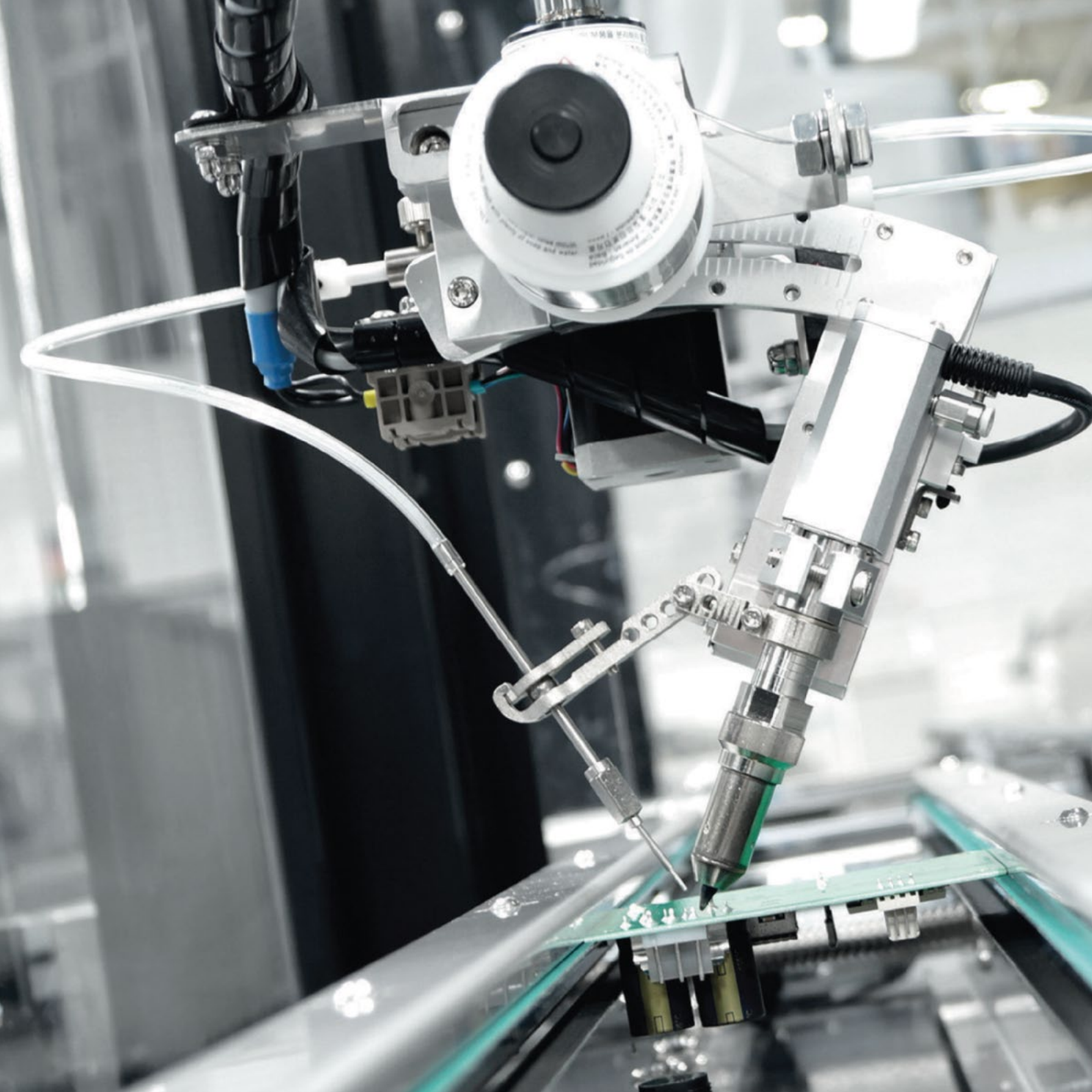
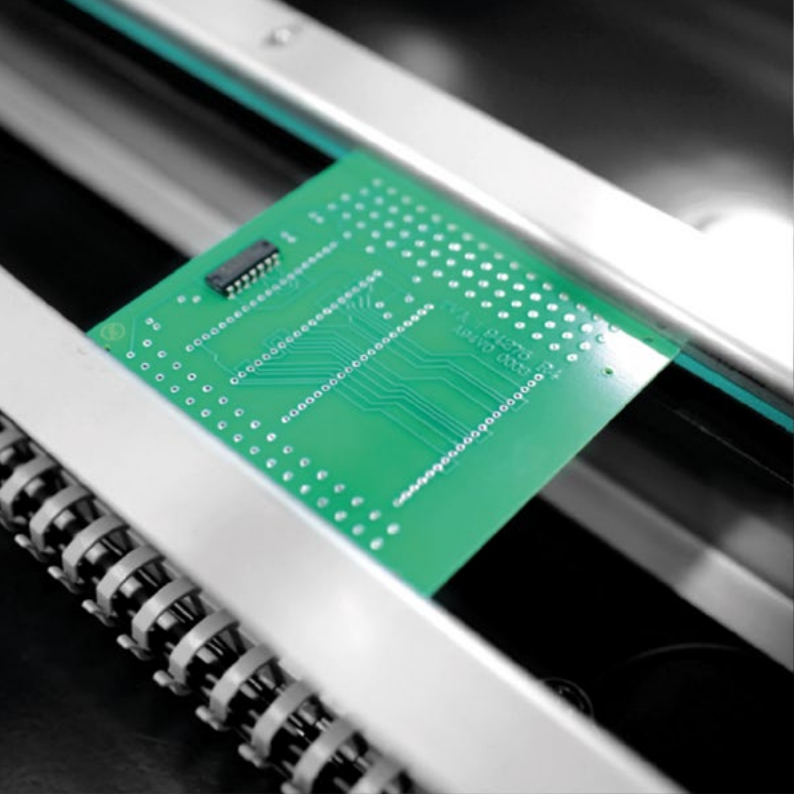
Technical specification

- Automatic workpiece positioning (mechanical or vision system)
- Process parameters controlled by the PLC
- Tin feeder with optional feeding profile configuration
- More than 40 different types of mechanical tip cleaner
- Induction power available for a tip - 150 W
- Tip mechanical cleaner
- Inline transport of the soldered part
- Modular design of the unit
- Possibility to control the soldering profile for each point
- Possibility to work in an automatic line with other devices
- Nitrogen shielding capability

Options

- Vision system for workpiece positioning
- Vision system for inspection after soldering process
- Statistical data available via OPC UA protocol
- Possibility of introducing product traceability
- Possibility of replacing the soldering head with ones of other functionalities

Diameter of the handled binder	0,8 mm 1,0 mm 1,2 mm
Width of supported applications	350 mm
Length of supported applications	420 mm





Dosing robot

Technical specification

- Automatic workpiece positioning (mechanical or vision system)
- Possibility of dosing adhesives, acrylics, silicones and coatings
- Valves for selective spray coatings
- Various types of medium containers (from 10 cl to 200 kg) can be used
- Inline transport of the used workpiece
- Modular design of the unit
- Possibility to control the varnishing profile depending on the detected workpiece
- Possibility to work in an automatic line with other REECO modular devices

Options

- Vision system from workpiece positioning
- Vision system for dosing/coating quality control
- Two-component media systems
- Volumetric dosing systems
- Statistical data available via OPC UA protocol
- Possibility of introducing product traceability
- Possibility of replacing the dosing head with ones of other functionalities

Technical data of the application depends on the type of valve used



Screwdriving robot

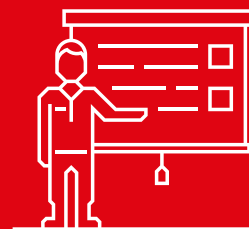
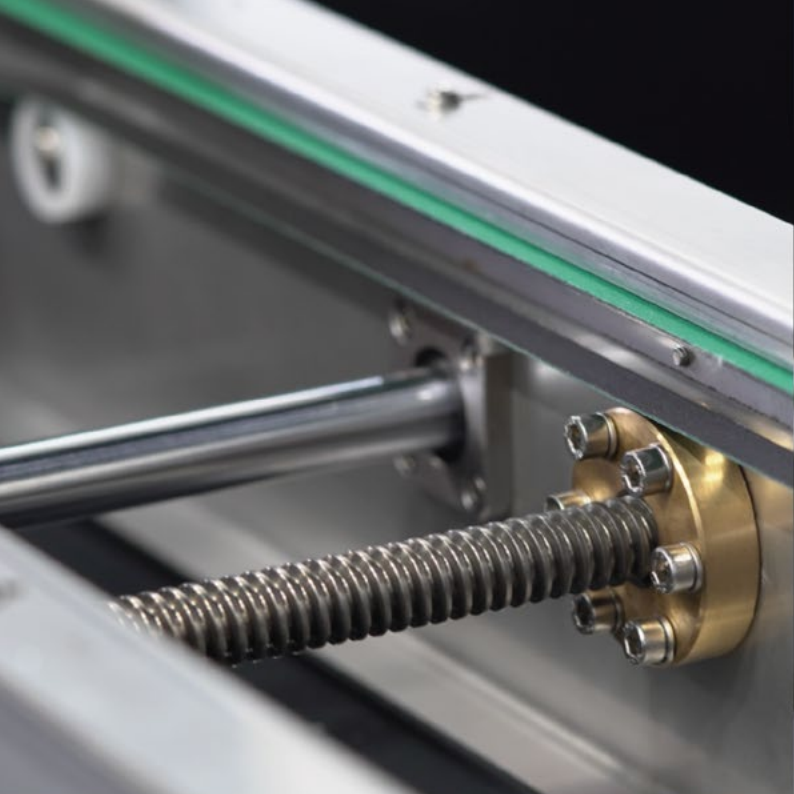
Technical specification

- Automatic workpiece positioning (mechanical or vision system)
- Screw feeder with control of screw readiness for feeding
- Vacuum screw hold system in the screwdriver
- Tightening torque control
- Inline transport of an assembled workpiece
- Modular design of the unit
- Possibility to work in an automatic line with other devices

Options

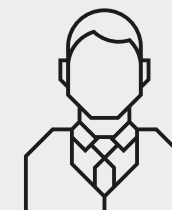
- Vision system for workpiece positioning
- Vision system to control the presence of screws after the process
- Screwdriver with two torque converters
- Control of tightening by the set angle
- Several screwdriving profiles
- Statistical data available via OPC UA protocol
- Possibility to control the screwdriving profile depending on the workpiece
- Possibility to record the tightening profile of each screw
- Possibility of introducing product traceability

Torque	0,05 - 0,4 Nm
Free Speed	600 - 1000 min ⁻¹
Controller	External



Training courses

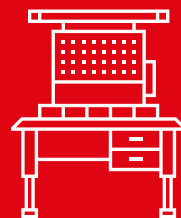
We provide training courses for engineers, technologists and maintenance services in the field of robot operation and programming.



Technical support

We provide professional assistance throughout the country both at the customer's premises and in the RENEX Technology Centre.





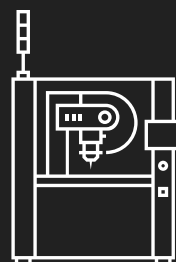
Reeco
ESD Workstations



Reeco
ESD Clothing



Reeco
Equipment



Reeco
Robots



2018

The REECO Soldering Robot received
the "GOOD DESIGN 2018" award
in the WORK AREA category.



Headquarters

Al. Kazimierza Wielkiego 6E
87-800 Włocławek, POLAND

T: + 48 54 427 04 00
E: office@reeco.info

Product Manager

T: + 48 601 592 555
T: +48 855 592 555



Foreign branches

Romania | Bulgaria

Strada Văliug, nr. 32, Sector 1
13986 București, ROMANIA

T: + 40 799 774 330
E: romania@reeco.info

Croatia | Slovenia

Ulica grada Vukovara 271
10000 Zagreb, CROATIA

T: + 385 99 44 89 777
E: croatia@reeco.info

Serbia

Kneza Mihajla Obrenovića 25
26000 Pančevo, SERBIA

T: + 381 13 23 17 880
E: serbia@reeco.info

REECO.INFO